

WOODStore.net

Browse more than 1000 plans, projects, books, techniques, & more

Thank You!

Thank you for ordering a WOOD® magazine download. We hope you enjoy being part of our online experience and that you have fun expanding your woodworking skills.

Please remember that this copyrighted material is for your use only. It is unlawful to share this file with someone else or to reprint it in any form.

Bill Krier
Editor in Chief, WOOD magazine

Adobe Acrobat Reader Troubleshooting Guide

If you can read this page, your Acrobat Reader program is working correctly! But you may still have problems or specific issues, such as printing and saving your downloadable file.

My printer won't print the text correctly
Almost all printing problems are due to not enough free system resources memory. The files are very memory intensive because they include graphics, text, and photos. Close all other programs/applications and print directly out of the Acrobat Reader program, not your Web browser.

Patterns are not printing full-size
Make sure your printer is set to print at 100 percent and that "print to fit" is not checked. These settings are selected in the printer setup or printer options.

I can't save my file now that it's downloaded
You must save the plan when you download the file. Download the file again, except this time try right-clicking on the red download button. A menu window will open. Select "Save target as" or "Save link as" to save the file to your hard drive. Once saved, you can open it up with Adobe Acrobat Reader.

For more details on using Adobe Acrobat Reader please visit our online help section at:
<http://www.woodstore.net/clicherforde.html>

WOOD Store Customer Favorites

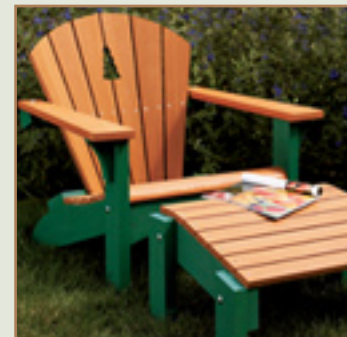
Shop Tools & Accessories



Indoor Furniture



Outdoor Furniture



Mission Furniture



Visit the WOOD Store at:
WOODStore.net

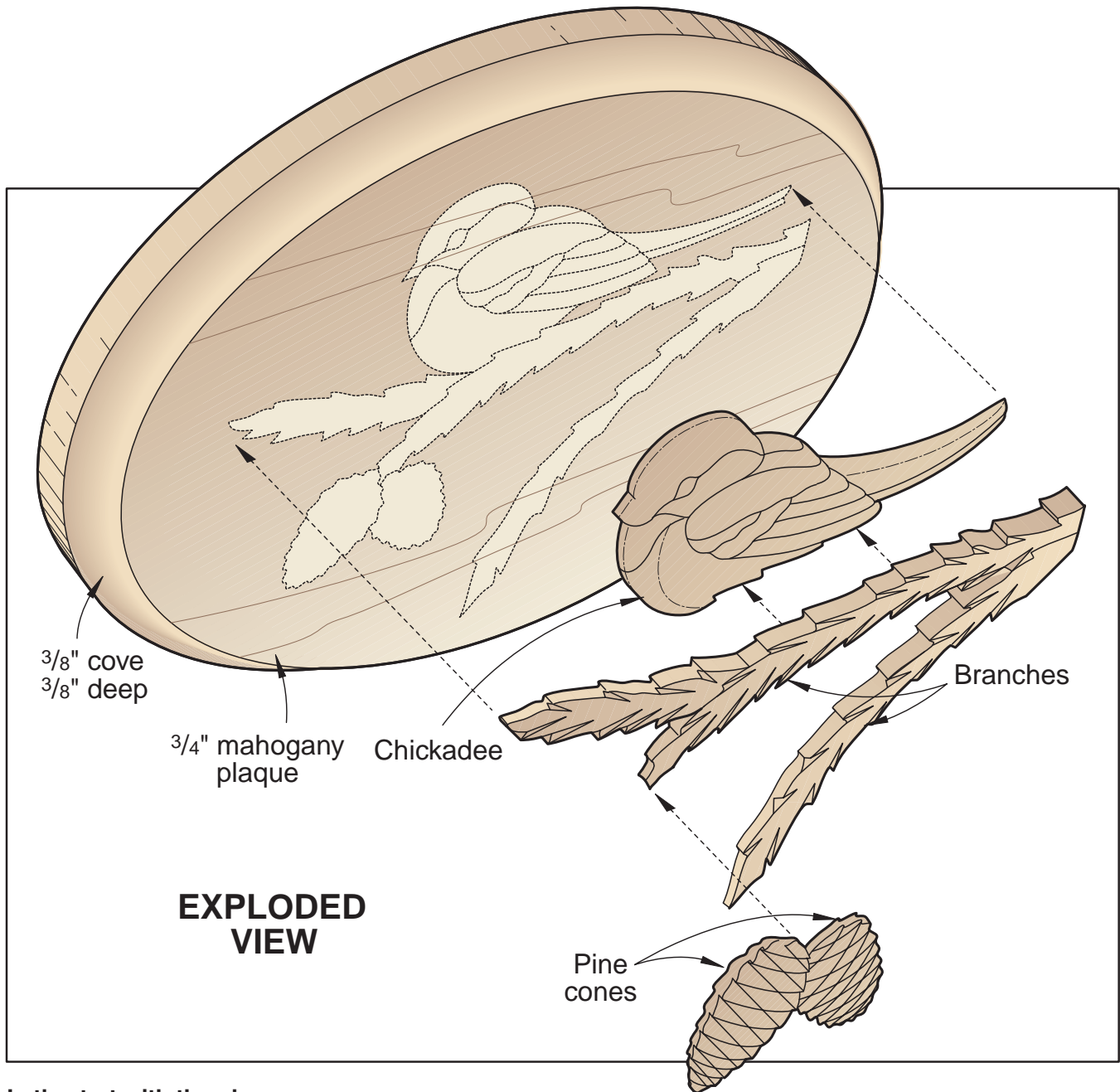


CHICKADEE INTARSIA PLAQUE



From
America's
premier intarsia artist **Judy Gale Roberts**

Capture a scene from nature by trying out this rewarding project. You'll learn how to mix and match a variety of contrasting hardwoods while working from our handy full-sized patterns.



EXPLODED VIEW

Let's start with the plaque

1 Make four photocopies of the full-sized Chickadee pattern on *page 6*.

2 Cut a piece of $\frac{3}{4}$ " stock to 7×10 " for the oval-shaped plaque (we used mahogany). Using spray adhesive, adhere one of the paper patterns to the front face of the blank. Scrollsaw or bandsaw the plaque to shape.

3 Sand the edges of the plaque to the marked pattern line. Remove the paper pattern from the backboard. Rout a $\frac{3}{8}$ " cove $\frac{3}{8}$ " deep along its front edge where shown on the Exploded View drawing.

4 Add a hanger, or drill an angled hole on the back side of the plaque for

hanging. Sand the plaque smooth, hand-sanding the routed cove.

Cut the chickadee and branch to shape

1 Plane or resaw one piece each of cherry, maple, walnut, and oak to $\frac{1}{4}$ " thick, and then cut to $5\frac{1}{4} \times 7\frac{1}{4}$ " for the chickadee, branch, and pine cones. Or, see the Buying Guide at the end of the article for our source of hardwood stock for this project.

2 Temporarily join the four layers of $\frac{1}{4}$ " hardwood stock face-to-face with double-faced tape.

3 Using the second photocopy, trim the paper pattern to rough shape, cutting just outside the edge of the pattern. Using spray adhesive, adhere the pattern onto the top piece of stock where shown on the Stack Lamination drawing on *page 4*.

4 Scrollsaw the parts to shape, starting with the bird's head and following with the rest of the body as shown in the photo on *page 3*. We used a #5 skip-tooth blade (12.5 teeth/inch). Then, cut the two pine cones and branches to shape.



Adhere the full-sized paper pattern to the top of the stacked lamination, and scrollsaw the pieces to shape.

***Note:** If your table has a large blade opening, use an auxiliary scrollsaw table with a zero-clearance blade hole to help you perform those small cuts. To make the table, cut a piece of 1/8" or 1/4" plywood to cover your saw's tabletop. Center the plywood side-to-side on the table, in front of the blade. Saw into the plywood until the edge nearest you meets the front edge of the saw table. Secure the wooden auxiliary table to the metal scrollsaw table with double-faced tape.*

5 Using the Key on the full-sized pattern, temporarily assemble the design on a flat surface using the third photocopied

pattern as a guide. You'll have enough pieces for four separate projects by using other wood combinations than the one shown. Check the fit between the parts, and sand or trim as necessary.

Now, contour-sand the pieces

1 To give the pieces a more realistic look, we contour-sanded them. We found it easiest to adhere the smallest pieces to a block for ease when shaping. For the bird body, cut a piece of 3/4" stock to 2 1/2 x 3 1/2". Place double-faced tape on one surface of the piece, and adhere the bird body pieces (minus the

tail) to the block. Scrollsaw the 3/4" stock about 1/16" outside the perimeter of the pieces. Now, using the remaining 3/4" block as a handle, contour the pieces with a drum sander or disc sander (an inflatable sander works great if you have one). Sand the bird's body to the shape shown on the Chickadee cross section on the full-sized pattern and in the introductory photo. Now, sand the bird's tail to shape.

2 Using double-faced tape, adhere a pine cone to the end of a 5/8" piece of dowel or a 5/8"-square block of wood 4" long.



A 4"-long piece of $\frac{5}{8}$ " dowel stock makes a sturdy handle for filing and sanding the pine cones to shape.



Use double-faced tape to secure a branch to the edge of $\frac{1}{2}$ " or $\frac{3}{4}$ " stock to steady the piece when shaping.

3 As shown in the photo on *page 4*, clamp the dowel in a vise, and use a file (we used a 6" XX slim triangular taper file) to form a groove at each crossing line on each pine cone. (We found it helpful to use the thumb on our left hand to guide the file.) Keep the teeth on the file facing forward, making the cut by pushing away from your body. Don't drag the file on the backstroke; you're not cutting and this will just dull the file. If your filed grooves start to disappear when sanding, stop and refile to deepen the grooves before continuing to sand. Repeat for the second pine cone.

4 Sand and file the branches to shape. (To support each branch, we secured

it with double-faced tape to the edge of a piece of 1/2"-thick stock. Then, we clamped this into our woodworker's vise as shown in the photo at right. This held the piece steady while we did the filing and sanding as shown in the photo.)

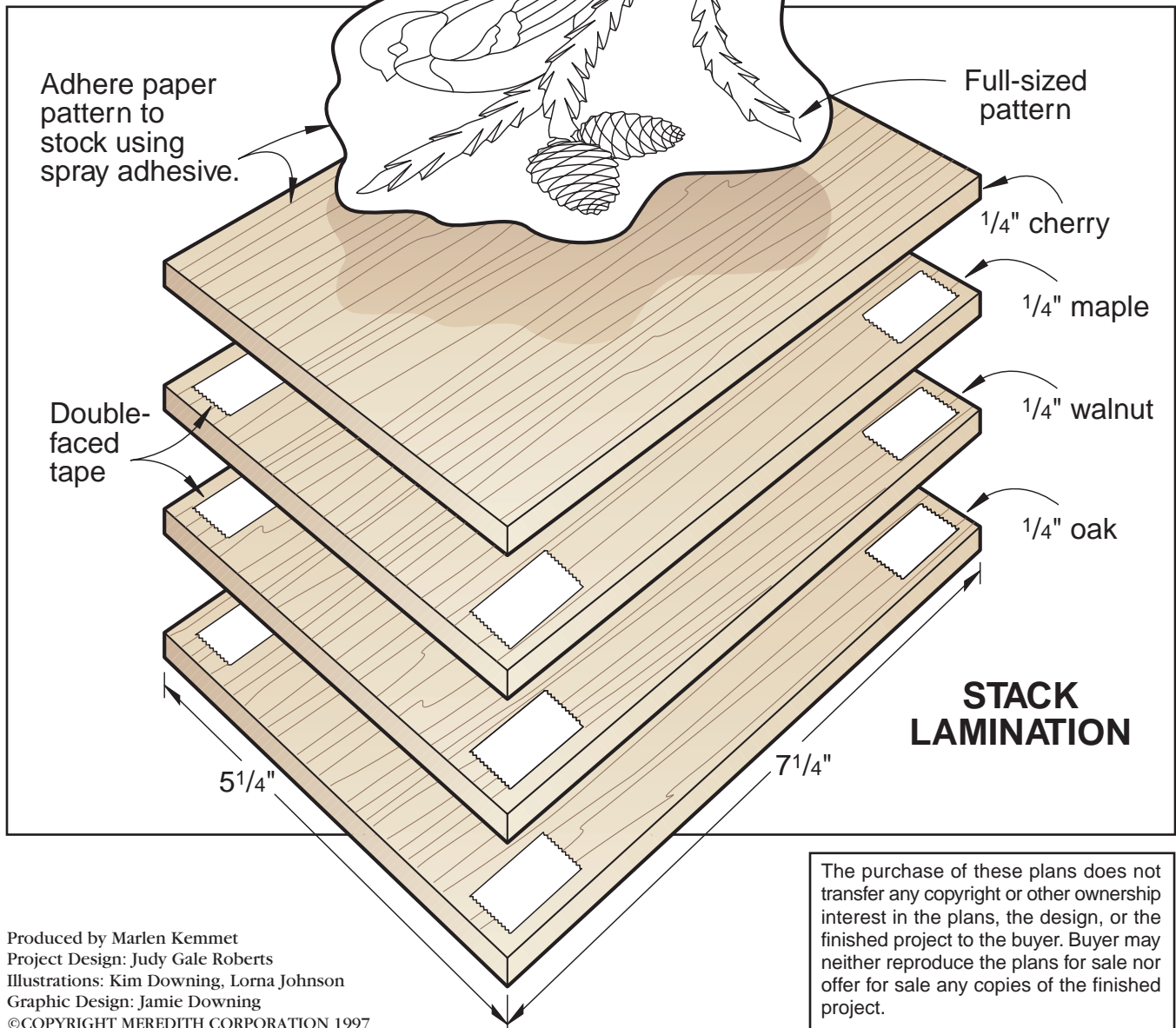
Adhere the tiny pieces to the plaque

1 Carefully locate and glue the branches to the plaque, using the fourth pattern copy as a guide. Immediately wipe off any excess glue with a damp cloth. (To

speed up the process, we used cyanoacrylate to glue the pieces in place. If you use regular woodworker's glue, you'll have to do just a few pieces at a time, weight them down until the glue dries, and then add a few more pieces.)

2 Starting with the bottom of the bird's body and working away from the branch, glue the chickadee pieces to the plaque. Add the bird's tail and pine cones.

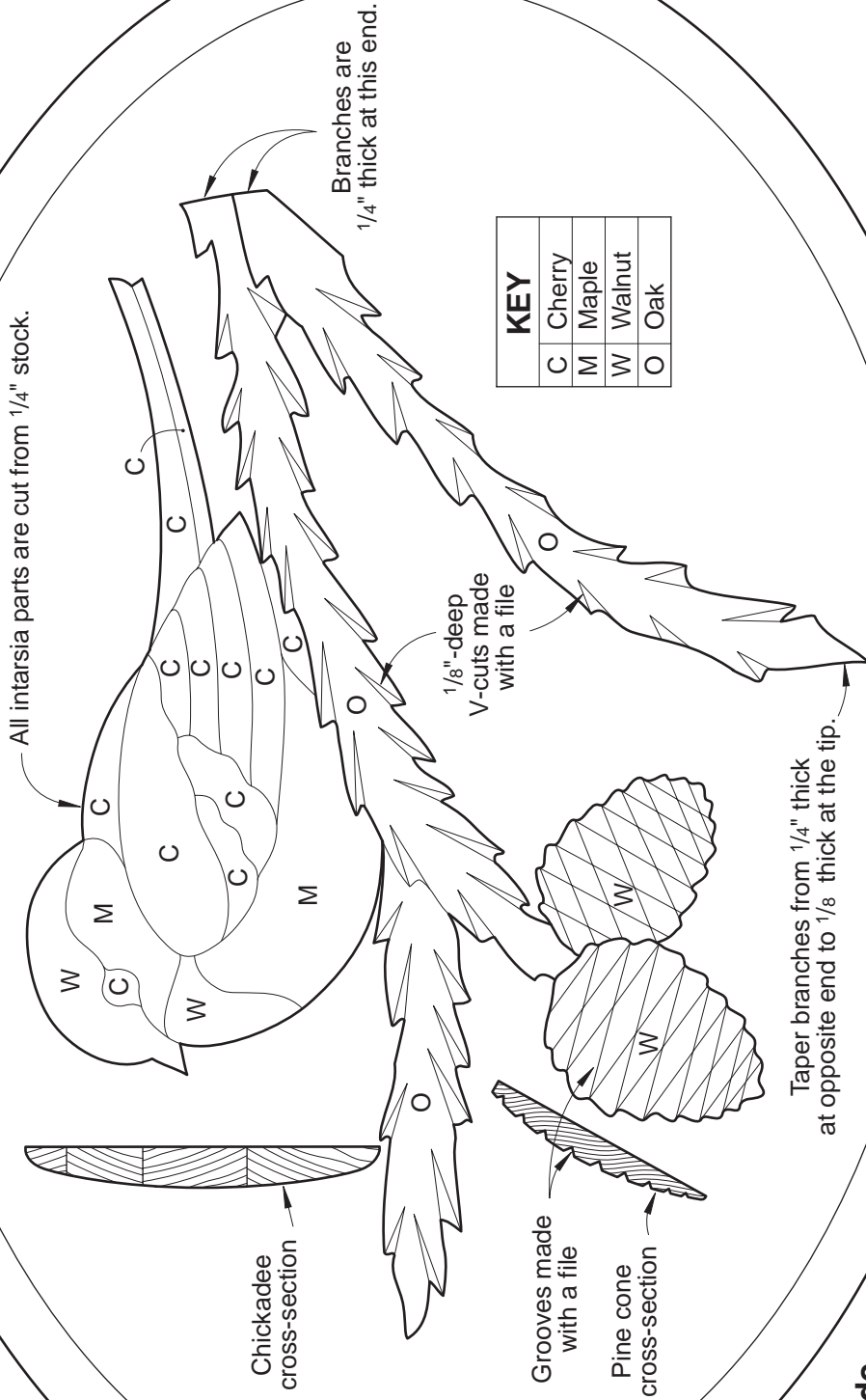
3 Use a toothbrush or compressed air to clean dust from the project. Spray on a couple light coats of finish. Do not apply too much finish at one time. Runs are unattractive and difficult to remove. 🌲



Produced by Marlen Kemmet
 Project Design: Judy Gale Roberts
 Illustrations: Kim Downing, Lorna Johnson
 Graphic Design: Jamie Downing
 ©COPYRIGHT MEREDITH CORPORATION 1997

The purchase of these plans does not transfer any copyright or other ownership interest in the plans, the design, or the finished project to the buyer. Buyer may neither reproduce the plans for sale nor offer for sale any copies of the finished project.

FULL-SIZED PATTERN



KEY	
C	Cherry
M	Maple
W	Walnut
O	Oak

Buying Guide

Hardwood kit. Four

pieces of 3/4x7x10"

mahogany; one piece each of

1/4" cherry, maple, walnut, and oak cut

to 5 1/4x7 1/4"; four full-sized patterns. Kit no.

WIS-102, \$29.95 ppd. Heritage Building Specialties, 205 North Cascade,

Fergus Falls, MN 56537, or call 800/524-4184.

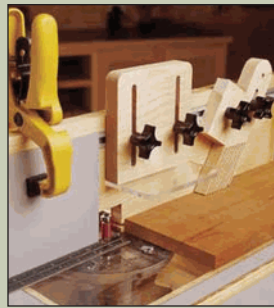
To ensure full-sized patterns are correct size, your printer should be set to print at 100% (not fit to page). Measure full-sized patterns to verify size.

WOODStore.net

Browse more than 1,000 woodworking project plans, articles, tool reviews, books, techniques, & more. Each plan includes step-by-step instructions, professional color photography, and detailed illustrations.



Plans



Techniques



Articles



Publications

WOODWorkersCenter.com

Looking for information from leading woodworking companies?

WOODWorkersCenter.com is just the site for your woodworking tool, accessory, and service informational needs. Use the online info request feature to request these companies latest catalogs or info.



WOODmagazine.com

The online presence of WOOD magazine, WOODmagazine.com speaks to online users of all woodworking skill levels with free woodworking plans, helpful forums, numerous articles, and numerous services to help you become a better woodworker. Visited by over 200,000 woodworkers per month, this site is geared to provide you with helpful information and shop-tested advice.

